



TOUCHSTONE INFRASTRUCTURE & SOLUTIONS PVT LTD, 1553, 17TH MAIN ROAD, 14TH CROSS STREET, ANNA NAGAR, CHENNAI 600 040 INDIA

P +91-44-4218 4289 / 2616 3633

E CHENNAI@TISPL.IN

W WWW.TISPL.IN

TAMIL NADU / KARNATAKA / TELANGANA / ANDHRA PRADESH / KERALA

DESIGNED BY MEDAMAX.CO.IN



TOUCHSTONE
INTERIOR SOLUTIONS



EXPERIENCE THE **TOUCHSTONE** DIFFERENCE

ENERGY. CHARACTER. ETHICS. SPLENDOUR. ETERNITY

Touchstone was established in 2007 as an interior turnkey contracting company. Our portfolio spans across IT, ITES, Retail, Hospitality, Institutions and Manufacturing sectors. At Touchstone every day begins with the pledge “We will ensure the highest quality in our work, deliver it within the time and cost set by our client”. We strive to make our clients happy at the end of the day and share a smile with them. Our clients are the most important asset of our business; we are happy to serve our clients and to win them more business through our effective, aesthetic and efficient project execution. Our day at Touchstone ends with a dream note “from here to where?” We constantly dream and pursue it through our actions. We believe in dreaming for we are led by a group of inspiring, aspiring, and perspiring design professionals. Our motto is to “Think Big and Do Big”. We dare to dream Big and scale great heights in this industry to achieve our vision. Our Vision is to sustain excellence, uphold ethics and continue beyond in eternity for generations to come.



PECKING AWAY UNTIL THE **JOB IS DONE**

INTERIOR CONTRACTING

ENHANCE PRODUCTIVITY THROUGH ENVIRONMENT

PRECISION & SPEED

01

We execute interior works end to end from civil works, partitions, flooring, false ceiling, modular furniture, interior finishes to signage. As a team with design knowledge we ensure that the design intent is never compromised. Our eye for details enable us to carry out everything to the smallest detail as per the drawings. We do not tolerate even the slightest variation as we know the value of our brand image and the importance of precision in our works.



MEP SERVICES

FITTING IN ANY WHERE WITHOUT BEING ANY LESS COMPLETE.

DESIGN & ELEGANCE

02

We understand the significance of the timely execution of all services in an interior project and seamlessly integrate it through well coordinated execution of all Mechanical, Electrical, Plumbing (MEP), Heating, Ventilation & Air Conditioning (HVAC) services. We offer supply, erection, installation, commissioning of all MEP & HVAC services in a project. We have a dedicated team to manage its execution at site and they work in unison with the other agencies working at the project site. We have worked with the multitude of leading consultants and they have found us to be good in terms of speed, quality and excellent coordination. We ensure all our services comply with standards and their governing parameters of performance.



NETWORKING, SAFETY & SECURITY

A DEMAND WHOSE IMPLEMENTATION GUARANTEES TIMELESS SPLENDOR

ESSENTIAL & ABSOLUTE

03

Networking within the premises and integrating it with other branches has become the norm; it has become essential to record human movement as the physical environment has become more transparent and devoid of hierarchies. This has made networking, safety and security systems a part of every business and not just the upmarket ones. We carry out the installation of all networking, safety and security systems and synchronise them appropriately as per the functional requirement of the client. We execute the automation of the various facilities in a building through networking, telecommunication, access control systems, close circuit television camera networks, automatic ambient room temperature and humidity controls, installation of surveillance cameras and monitoring systems.



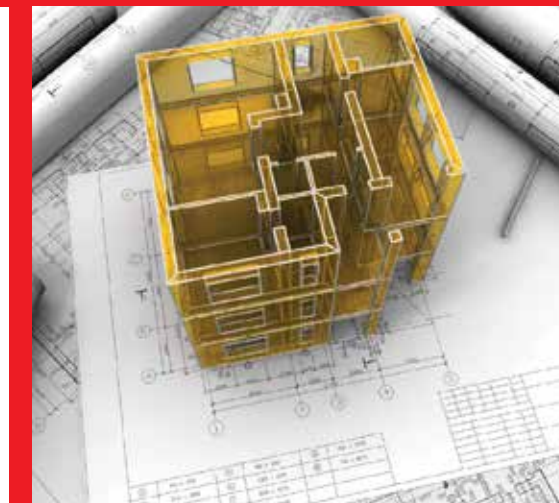
TURNKEY CONTRACTING

INTERIORS EXECUTED WITH METICULOUS ATTENTION

TRANSPERANCY & ETHICS

04

We carry out all your interior works, electrical, networking, plumbing, fire fighting, heating, ventilation, air-conditioning, safety, security systems & design services all under our scope. We have expertise in each of these and ensure smooth completion of your project by our seamless coordination within our team and with the other stakeholders in the project. We have delivered all of these services to our clients and they have vouched for the control that we have on the project.





PROGRESS WITH **ASSURANCE**

TIME. QUALITY. BUDGET. SAFETY. MUTUAL. RELIABLE.
RESPONSIVE. RESPECT

We as a company are deeply concerned and committed to deliver on time, with quality & within budget. It has been a continuous endeavor to improve our strategies, systems & competency towards this cause. We believe, no work is so important that it has to be done without due consideration for safety. We do all it takes to keep work place safe. We nurture the culture of being mutually reliable, responsive & respectful. We trust this culture helps us build healthy relationships & worthy human values besides good interiors.



HONEYWELL

PROFILE : OFFICE INTERIOR
ROLE : DESIGN & BUILD
SIZE : 29,334 SQ.F.T.
LOCATION : CHENNAI
STATUS : COMPLETED - 2019





KNIGHT FRANK

PROFILE : OFFICE INTERIOR
 ROLE : TURNKEY
 SIZE : 4600 SQ.F.T.
 LOCATION : CHENNAI - GREAMS ROAD
 STATUS : COMPLETED - 2015



MSYS

PROFILE : OFFICE INTERIOR
 ROLE : TURNKEY
 SIZE : 42,000 SQ. FT.
 LOCATION : CHENNAI - THORAIPAKKAM
 STATUS : COMPLETED - 2016



CoWrks

PROFILE : COWORKING SPACE
ROLE : TURNKEY
SIZE : 90,000 SQ. FT.
LOCATION : PERUNGUDI
STATUS : COMPLETED - 2019





BIAS

PROFILE : OFFICE INTERIOR
ROLE : DESIGN & BUILD
SIZE : 14,236 SQ.FT.
LOCATION : BANGALORE
STATUS : COMPLETED - 2019





SULEKHA

PROFILE : OFFICE INTERIOR
 ROLE : CIVIL AND INTERIOR
 SIZE : 42,000 SQ. FT
 LOCATION : CHENNAI
 STATUS : COMPLETED - 2016



DANIELI

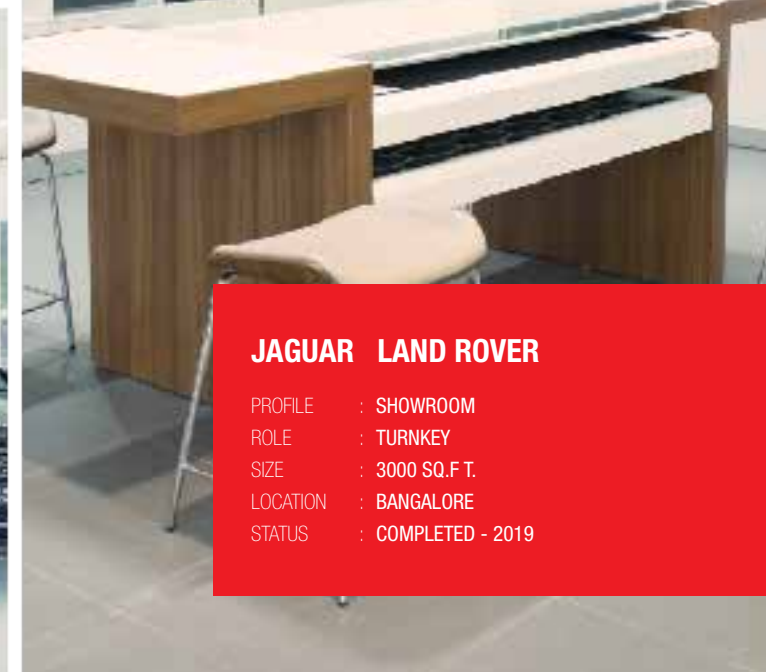
PROFILE : OFFICE INTERIOR & SHOP FLOOR CABINS
 ROLE : INTERIOR, ELECTRICAL & FAS
 SIZE : 55,000 SQ. FT.
 LOCATION : TADA - SRI CITY
 STATUS : COMPLETED - 2013 (PHASE 1)



NEW PDI, DAIMLER

PROFILE : OFFICE AND SHOWROOM INTERIOR
ROLE : INTERIOR
SIZE : 12,000 SQ. FT.
LOCATION : CHENNAI - ORAGADAM
STATUS : COMPLETED - 2016





JAGUAR LAND ROVER

PROFILE : SHOWROOM
 ROLE : TURNKEY
 SIZE : 3000 SQ.F.T.
 LOCATION : BANGALORE
 STATUS : COMPLETED - 2019



MORRIS GARAGES

PROFILE : SHOWROOM
 ROLE : TURNKEY
 SIZE : 5000 SQ.F.T.
 LOCATION : CHENNAI - NANDANAM
 STATUS : COMPLETED - 2019



HYUNDAI FPL

PROFILE	: OFFICE & SHOWROOM INTERIOR
ROLE	: TURNKEY
SIZE	: 12,000 SQ. FT.
LOCATION	: CHENNAI - CHROMPET
STATUS	: COMPLETED - 2018





VIRTUSA POLARIS



NEXA



ICCW



AMTDC

OUR SIGNIFICANT WORKS



STANDEX



WIPRO



IITM RP



BONFIGLIOLI

M/S TOUCHSTONE INFRASTRUCTURE & SOLUTION PVT. LTD. HAVE COMPLETED THE ENTIRE WORK AS PER THE SCOPE OF THE PROJECT WITHIN 6 WEEKS AGAINST THE DELIVERY SCHEDULE OF 10 WEEKS UP TO THE MARK OF VERY SATISFACTION. THE TEAM WORK SHOWN BY M/S TOUCHSTONE IS EXCELLENT AND THEY HAVE EXECUTED ENTIRE PROJECT IN A PROFESSIONAL MANNER WITH A MINUTE DETAILS OF INTERIORS. QUALITY OF WORKMAN SHIP AND DOCUMENTATION IS APPRECIABLE. WE WISH THEM A GREAT SUCCESS IN THEIR PROFESSION.

WE COMMEND TOUCHSTONE INFRASTRUCTURE AND SOLUTIONS PVT LTD FOR THEIR ABILITY TO STAGE A PROJECT WITH A HIGH LEVEL OF ATTENTION. THEY WERE ABLE TO TAKE OUR IDEAS AND TRANSFORM THEM INTO REALITIES. WE HAD THE MOST REWARDING RELATIONSHIP WITH THEM.

WE TRULY APPRECIATE TOUCHSTONE'S SINCERE EFFORTS WHICH HELPED IN THE TIMELY DELIVERY OF OUR PROJECT WITH VERY GOOD QUALITY OF SERVICE.

P. GOPI KRISHNA GR. HEAD, MSA
ISRO

SRIDHAR ACHARYA
DOVER

VENKATARAMAN
KNIGHT FRANK

NEXA

DANIELI

BIAS
Business Intelligent Application SolutionsMSys
Technologies
Expanding Horizons

COWRKS

RR DONNELLEY

Sulekha



DAIMLER

Bonfiglioli
Forever Forward

Capgemini

OBO
BETTERMANN

Flipkart

DOVER



Deutsche Bank

FPI
FUTURE PIPE INDUSTRIES

LARSEN & TOUBRO

Nokia Siemens
NetworksHoneywell
THE POWER OF CONNECTED